

STAND-OFF ALUMINUM SLENDER ANODES DATASHEET

ECOANODE's aluminum marine anodes are precision-engineered to deliver unparalleled longevity and performance in demanding saline environments. A defining feature of their design is their strategic elevation from the structures they protect. This critical stand-off configuration minimizes the detrimental effects of current shielding, a common issue with flush-mounted anodes, and promotes a uniform current distribution. This results in an exceptional utilization factor of 90%, ensuring nearly all the anode material is consumed productively, thereby maximizing value and extending service intervals.

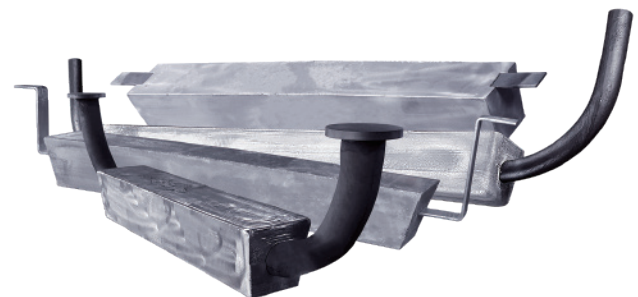
Cast from high-performance aluminum alloys, these anodes provide a consistent, reliable protective current and are indispensable for safeguarding critical assets like offshore platforms and ship hulls. The product range is tailored for diverse applications, featuring variants such as the stand-off anode with a double-cranked flat bar insert for robust mounting, the stand-off anode with a cow horn tubular insert for enhanced water flow and performance, the flush-mounted platform anode with a straight tubular insert for low-clearance areas, and anodes with solid rod inserts for superior mechanical strength. Their proven efficiency and design adaptability make them a fundamental component in any robust marine cathodic protection system.

CHEMICAL COMPOSITION

Element Content	GALVALUM III	DNV-RP-B401-2011	GS EP COR 201
Zinc (Zn)	2% ~ 6%	2.5% ~ 5.75%	4.75% ~ 5.75%
Indium (In)	0.01% ~ 0.02%	0.015% ~ 0.04%	0.015% ~ 0.02%
Silicon (Si)	0.08% ~ 0.2%	0.12% max.	0.06% ~ 0.12%
Iron (Fe)	0.13% max.	0.09% max.	0.12% max.
Copper (Cu)	0.006% max.	0.003% max.	0.003% max.
Cadmium (Cd)	—	0.002% max.	0.002% max.
Other Impurities	0.1% max.	0.1% max.	0.1% max.
Aluminum (Al)	Remainder	Remainder	Remainder

ELECTROCHEMICAL PROPERTIES

Technical Measurement	Performance
Open Circuit Voltage (min.)	-1.10 Volts
Closed Circuit Voltage (min.)	-1.05 Volts
Current Capacity	2500 A.h/kg (1135 A.h/lbs)
Current Efficiency (min.)	90%
Consumption Rate	3.4 kg/A.y (7.6 lbs/A.y)



ECOANODE SOLUTIONS SDN. BHD

Plo 635, Jalan Platinum 2,
Kawasan Perindustrian Pasir Gudang (Zon 12B),
81700 Pasir Gudang,
Johor Darul Takzim, Malaysia

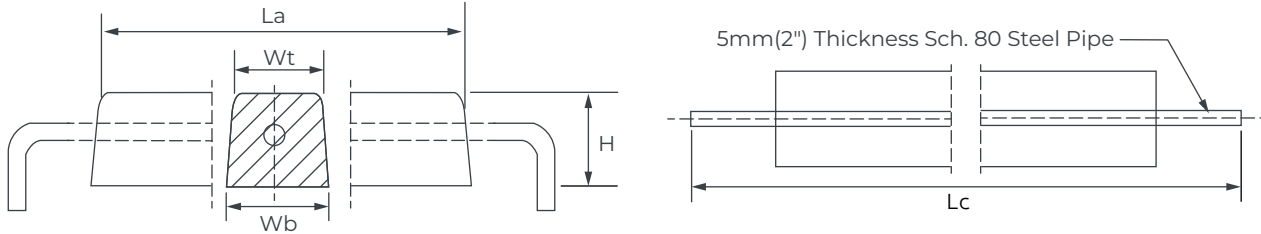
(+60) 7752 6352
info@ecoanodes.com

www.ecoanodes.com



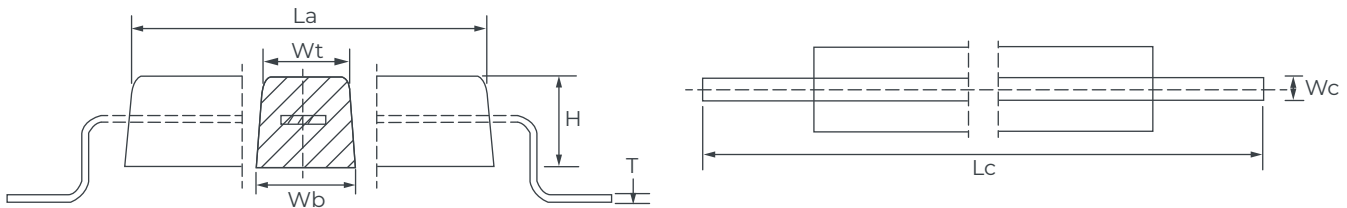
SPECIFICATIONS

Stand-Off Aluminum Anode With Cow Horn Tubular Insert



Item No.	Anode Dimensions				Core Dimensions		Weight	
	Wt	Wb	H	La	Dia.	Lc	Anode	Core
EA-AL-SST1	150 mm (5.9")	170 mm (6.7")	160 mm (6.3")	900 mm (35.4")	50 mm (1.97")	1300 mm (51.2")	56.5 kg (124.6 lbs)	10.5 kg (23.1 lbs)
EA-AL-SST2	170 mm (6.7")	200 mm (7.9")	180 mm (7.1")	1500 mm (59.1")	50 mm (1.97")	1900 mm (74.8")	126 kg (277.8 lbs)	14 kg (30.9 lbs)
EA-AL-SST3	200 mm (7.9")	210 mm (8.3")	220 mm (8.7")	1600 mm (63")	60 mm (2.36")	2000 mm (78.7")	181.5 kg (400.1 lbs)	18.5 kg (40.8 lbs)
EA-AL-SST4	220 mm (8.7")	240 mm (9.4")	230 mm (9.1")	2300 mm (90.6")	89 mm (3.5")	2800 mm (110.2")	289 kg (637.1 lbs)	35.5 kg (78.3 lbs)

Stand-Off Aluminum Anode With Double Cranked Flat Bar Insert



Item No.	Anode Dimensions				Core Dimensions			Weight	
	Wt	Wb	H	La	Wc	T	Lc	Anode	Core
EA-AL-SSF1	115 mm (4.5")	135 mm (5.3")	130 mm (5.1")	500 mm (19.7")	50 mm (1.97")	4 mm (0.16")	750 mm (29.5")	21.6 kg (47.6 lbs)	1.1 kg (2.4 lbs)
EA-AL-SSF2	115 mm (4.5")	135 mm (5.3")	130 mm (5.1")	750 mm (29.5")	50 mm (1.97")	4 mm (0.16")	1000 mm (39.4")	32.5 kg (71.7 lbs)	1.5 kg (3.3 lbs)
EA-AL-SSF3	115 mm (4.5")	135 mm (5.3")	130 mm (5.1")	1000 mm (39.4")	50 mm (1.97")	6 mm (0.24")	1250 mm (49.2")	43 kg (94.8 lbs)	3 kg (6.6 lbs)
EA-AL-SSF4	115 mm (4.5")	135 mm (5.3")	130 mm (5.1")	1250 mm (49.2")	50 mm (1.97")	6 mm (0.24")	1500 mm (59.1")	53.7 kg (118.4 lbs)	3.6 kg (7.9 lbs)
EA-AL-SSF5	160 mm (6.3")	220 mm (8.7")	180 mm (7.1")	700 mm (27.6")	50 mm (1.97")	8 mm (0.31")	950 mm (37.4")	63.8 kg (140.7 lbs)	2.8 kg (6.2 lbs)
EA-AL-SSF6	200 mm (7.9")	280 mm (11")	150 mm (5.9")	800 mm (31.5")	50 mm (1.97")	10 mm (0.39")	1050 mm (41.3")	76.5 kg (168.7 lbs)	4 kg (8.8 lbs)
EA-AL-SSF7	180 mm (7.1")	220 mm (8.7")	180 mm (7.1")	850 mm (33.5")	50 mm (1.97")	10 mm (0.39")	1100 mm (43.3")	81.5 kg (179.7 lbs)	4.2 kg (9.3 lbs)
EA-AL-SSF8	148 mm (5.8")	178 mm (7")	170 mm (6.7")	1500 mm (59.1")	50 mm (1.97")	10 mm (0.39")	1800 mm (70.9")	110 kg (242.5 lbs)	6.8 kg (15 lbs)

ECOANODE SOLUTIONS SDN. BHD

Plo 635, Jalan Platinum 2,
Kawasan Perindustrian Pasir Gudang (Zon 12B),
81700 Pasir Gudang,
Johor Darul Takzim, Malaysia

(+60) 7752 6352
info@ecoanodes.com

www.ecoanodes.com

